



Plot with new-build project in Ses Salines

Price

850.000€

Plot area
14.267m²

Built área
421m²

Bedrooms

4

Bathrooms

4

Location

Ses Salines



Description: This new-build project is located in Ses Salines, in a quiet area in the southeast of Mallorca, offering privacy, space and an ideal setting to enjoy the Mediterranean lifestyle. The property sits on a large plot of 14,267 m² and offers a total built area of 421.84 m², with a functional layout designed for maximum comfort.

On the main floor, there is an entrance hall leading into a spacious open-plan area that combines the kitchen and dining space. The kitchen is fully equipped with high-end appliances and includes a separate pantry. On this level, you will also find the living room with built-in wardrobes and a guest toilet. The house is particularly bright thanks to large windows that allow plenty of natural light and create a seamless connection with the outdoor areas. An elevator connects all floors of the property.

The house offers four bedrooms in total. On the main floor, there are two bedrooms, both with built-in wardrobes and en-suite bathrooms. The upper floor features two additional bedrooms, both with en-suite bathrooms, walk-in wardrobes and built-in wardrobes, designed as spacious and comfortable private areas.

From the living room, there is direct access to the outdoor areas, which include a pergola with an outdoor dining area, the pool terrace and a second pergola with a lounge area. The exterior also features a guest toilet, a pool shower and large landscaped garden areas surrounding the house.

The lower level or basement includes a garage with space for three vehicles, a separate laundry room and two rooms currently planned as a gym and a wine cellar. This level also features a landscaped area that brings in natural light.

A well-balanced property combining design, functionality and generous indoor and outdoor spaces, ideal as a permanent residence or a second home in the southeast of Mallorca.













Location: Ses Salines, located in the southeast of Mallorca, is known for its peaceful atmosphere, authentic character and strong connection with nature. The town has preserved the traditional essence of the island and offers a relaxed Mediterranean lifestyle all year round.

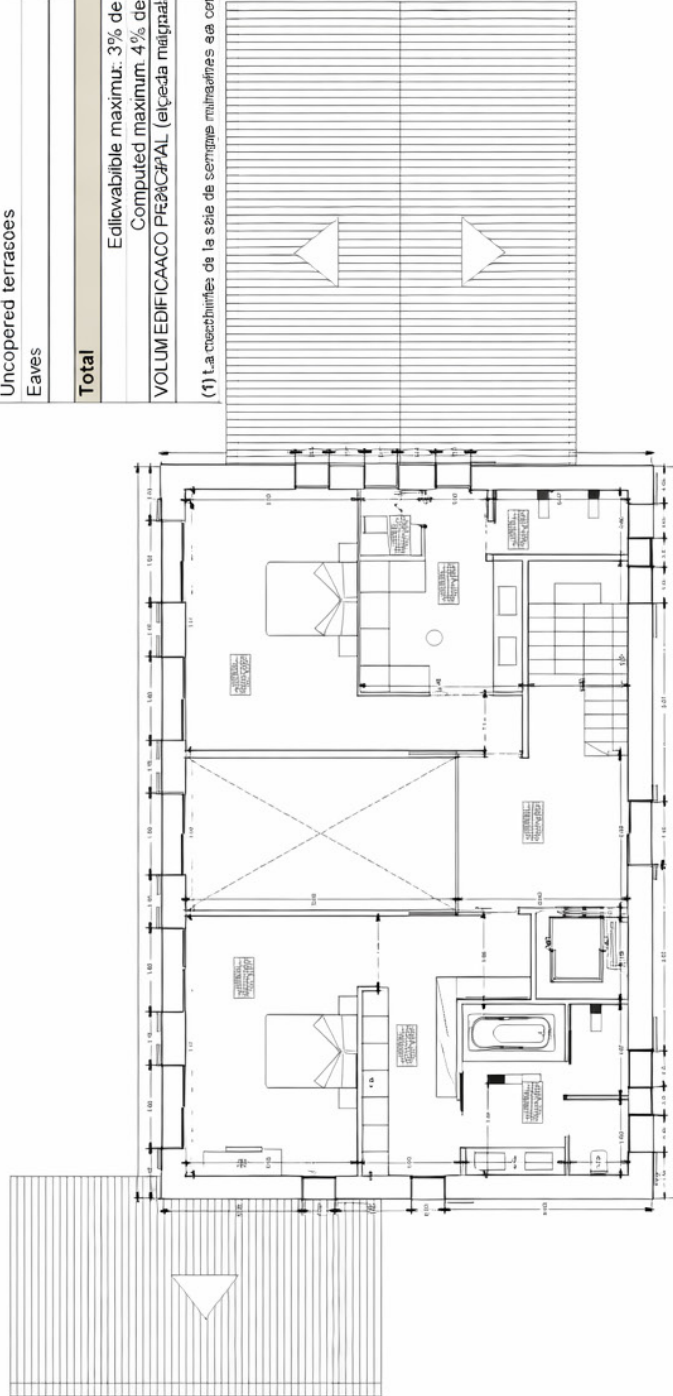
Surrounded by rural landscapes, historic salt flats and protected natural areas, it is just a short drive from some of Mallorca's most iconic beaches, such as Es Trenc, Es Carbó and Ses Covetes, famous for their white sand and crystal-clear waters. The proximity to the coast and unique natural surroundings makes this area ideal for enjoying the sea, outdoor activities and a calm way of life.

Nearby towns such as Campos, Santanyí and Colònia de Sant Jordi provide a wide range of services, shops and excellent dining options. Palma is around 40 minutes away, Palma de Mallorca International Airport can be reached in approximately 35 minutes, and several golf courses, including Vall d'Or Golf, are within a 40–45 minute drive.

Overall, Ses Salines offers a well-balanced mix of tradition, nature and proximity to the sea, making it one of the most attractive areas in the southeast of Mallorca for those seeking quality of life in an authentic setting.

Superfícies construïdas	mesurada	comptable a edificabilitat	comptable s efectes d'ocupació
Garaage i magatzems en planta soterrani	221,34 m²	0,00 m²	0,00 m²
Sala indigues pòcins en planta soterrani	21,71 m²	8,00 m²	9,01 m²
Gabxatge en planta oberta	130,06 m²	226,85 m²	226,06 m²
Habitatge en planta pis	31,76 m²	169,05 m²	0,00 m²
Perso	31,16 m²	10,66 m²	11,90 m²
Pergola 1 (sala menjador)	46,17 m²	0,00 m²	31,05 m²
Pergola 2 (torradora PB)	13,99 m²	0,00 m²	11,70 m²
Pergola #3 (pool)	34,17 m²	3,06 m²	71,70 m²
Asse piscina	4,37 m²	4,37 m²	4,30 m²
Mirall diagonal piscina	33,00 m²	7,38 m²	16,00 m²
Terrasses descobertes + vorera piscina	56,74 m²	30,06 m²	34,76 m²
Escaltes, meata i reüll a l'exterior	67,17 m²	39,06 m²	52,10 m²
Uncopered terraces	47,12 m²	10,06 m²	43,10 m²
Eaves	45,11 m²	18,06 m²	5,72 m²
Total	421,48 m²	421,48 m²	510,18 m²
Edificable maximum: 3% de la 14.134,36 m²		424,03 m²	
Computed maximum: 4% de la 14.134,36 m²			566,08 m²
VOLUM EDIFICACIO PRINCIPAL (eigida municipal) 3.366,36 m³.		1.355,44 m³	

(1) La mesurament de la sala de sempregnes multimedials es comptabilitza com a despeses "terranes" a efectes d'ocupació





The Exclusive Collection

Batle Andreu Burguera Mut 3
07640 Ses Salines, Mallorca
+34 660 990 707
dani.gonzalez@remax.es

Legal Notice and Data Protection

The content of this presentation, including texts, images, plans, logos, and any other material, is the exclusive property of "Remax Exclusive Collection" and is protected by intellectual and industrial property laws. Its total or partial reproduction, distribution, or communication, in any format or medium, is strictly prohibited without the express written authorization of the owner.

The data, prices, plans, and descriptions contained in this document are for informational purposes only and do not constitute a contractual commitment, and may be subject to modifications by the owner or developer.

In accordance with Regulation (EU) 2016/679 (GDPR) and Organic Law 3/2018 on Personal Data Protection and guarantee of digital rights (LOPDGDD), you are hereby informed that any personal data provided as part of this presentation will be treated confidentially for the purpose of responding to inquiries or managing requests for commercial information. Data subjects may exercise their rights of access, rectification, erasure, objection, and all other rights recognized by law by contacting juan.bonet@remax.es.

The information contained in this document is confidential and is provided exclusively to the recipient for informational and professional purposes. Any unauthorized disclosure or use is strictly prohibited.